

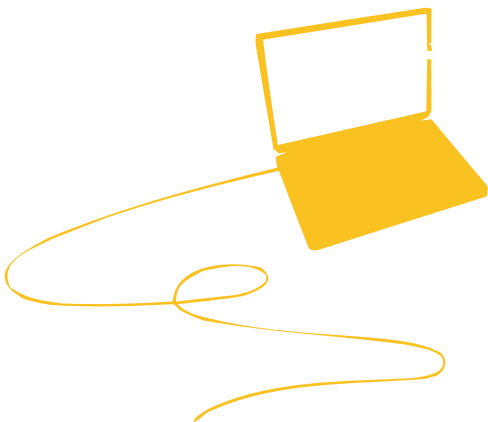


## Company Profile

*An Introduction to Promiti Computers & Network (Pvt.) Ltd.*

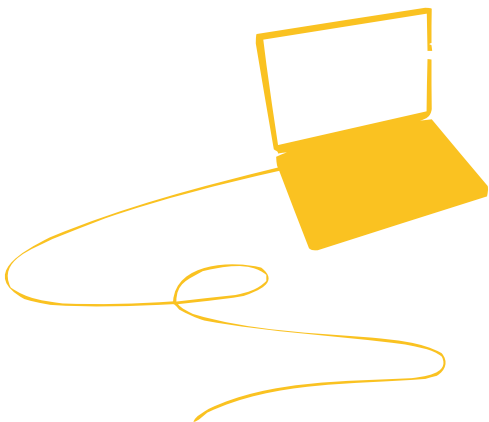
**2012**

**November**



<http://www.promiti.com>





## Contents

Mission & Values	03
Key Facts	04
Services	05
Expertise	06
Technical Skills	07
How We Work	08
Clients & Strategic Partners	09
Contact	10

# Mission and Values

**Our mission** is to enable people and companies to increase their business value through the use of IT technologies.

**We aim** at delivering services which will open new possibilities for our clients and allow them to work effectively with creativity.

**Our values** are: people, clients and quality.

## People

We believe that the most valuable resource we possess is our people. Promiti is not just a gathering of high skilled individuals, but a team. It is built not only on someone's exceptional skills, but rather on collaboration and teamwork. The most valuable resource that Promiti has is the people. The effective work of Promiti resides on collaboration and team work among all its members, each one perfectly doing his own job.

## Clients

Promiti is dedicated to its clients and partners. We believe that the most important factor of our success is the success of our clients (and provide them with tools for successful business). Promiti, both in idea and realization, is a client-oriented company. By supplying our customers with top resources and skills, we fulfill our main goal - add value to their businesses through suitable application of information technologies. Because we work closely with and for our clients, we are successful only when our clients succeed.

## Quality

We pay special attention to the quality assurance of the products and services we deliver. We believe that this is the best way to make products work as effectively as possible. Our clients can rely on our products working stably and as designed because we put an emphasis on quality assurance as a key factor in project success.



# Key Facts

<b>Type</b>	Private Limited Company
<b>Founded</b>	July 1996
<b>Registration</b>	1998 (as Joint Stock Company)
<b>Top Level</b>	<b>Managing Director</b> Md. Ruhul Amin  <b>Director</b> Md. Tajul Islam
<b>Business Area</b>	Software Development, Network Solutions and Consultancy.
<b>Banking</b>	Islami Bank (BD) Limited, Chawkmogoltuly Branch, Dhaka
<b>Affiliation</b>	Bangladesh Computer Samity (BCS) Bangladesh Association of Software and Information Services (BASIS)



# Services

Promiti offerings are based on the concept of **full life cycle software development**. You will find here the entire spectrum of services from business analysis to testing and support depending on the current technical level of your solution.

Promiti services on customised software development cover consulting and business process analysis, application design and development, system integration and customization, independent testing and support. Whatever you require, you will find it available at one place.

Throughout our history we have developed and customized solutions of different types, however, our particular interest and expertise lies in the following areas:

- *Enterprise-level solutions (MIS, CRM, ERP)*
- *Web Based Enterprise Content Management Solutions (Web CMS, collaboration and document management solutions, intranet/extranet)*
- *Web portals (e-commerce solutions, communities and networks, real-estate and rental solutions, e-learning systems, Job portal Management System, Customized Websites etc.)*
- *SMS Based Services (SMS Based Products Information through Bulk SMS, Marketing through Push-Pull and WAP Services, Content Provider for all the existing Mobile Operators across the Country.)*

## Core Points

### Custom Development

Development from scratch

### Customization

GUI customization  
Customizable frameworks  
Add-ons and plug-ins  
Integration  
Localization

### Integration

Interface integration  
Integration with legacy systems  
With 3rd-party applications  
With ERP solutions

### Consulting

Choice of technology

### Migration

Data migration  
Migration to new technology  
Platform migration

### Testing

GUI testing  
Functional testing  
Load/Stress testing  
Acceptance testing

### Support & maintenance

Hardware & Software  
User training

### Mobile Information

SMS Marketing  
WAP Content Management



# Expertise

## Solutions

- Management Information System (MIS)
- Content management systems
- Customer relationship management (CRM)
- Intranet/Extranet
- Rich web applications (web portals, e-learning solutions, online marketplaces and auctions, web CMS)
- Enterprise Resource Planning (ERP) System

## Products

- Recruitment Management System
- Visitor Management System
- Micro Finance Management System
- Human Resource Management System
- Payroll Management System
- Inventory Management System
- Library Management System
- Student Management System
- Accounting Information System (Trading/Non-Trading)
- Sales Management System
- Content Management System (CMS)
- Barcode Generator
- Student Fee's Collection System
- E-Commerce Online Shopping Cart

## Technology

*Database Server:* Oracle Database 11g, MySQL, MS-SQL Server

*Web Server:* Oracle application server, Apache, TomCat, JBoss, IIS.

*Middle Tier:* OC4j, Oracle Forms Server, Oracle Report Server, J2EE, MODPL/SQL, MOD PERL, .NET, PHP, TomCat, JBoss, WebLogic, Flex

*Framework:* JSF, Struts, .NET, CakePHP, Zend, CodeIgniter etc.  
*Front End Client:* HTTP client (IE, Mozilla, etc.) and Jinitiator

*Report Builder:* Crystal Report, IReport, Oracle Report Builder.

*IDE:* Oracle Developer Suite, Visual Studio, Jbuilder, Cbuilder, Dreamwaver, Netbeans, Notepad++, Eclipses etc.

*Operating System:* Red Hat Enterprise Linux (RHEL), Windows 2000, Winsows 2003 Server, Windows XP, Windows Vista, Windows 7, Windows 2008 Server.



# Technical Skills

The choice of technologies for your project implementation is a critical issue because it will not only influence your project development time and cost, but also will determine how your application will stand the test of time and will be approved and appreciated by your clients. With Promiti you will be able to navigate in all the technologies and platforms listed below, to choose the most up-to-date solution.

You will be able to discuss and negotiate the choice of the programming languages and technologies suitable for project aims, size and budget. We are always attentive to all your requirements and wishes, including technological preferences, because we believe that only close cooperation with our customers all the way in project development can bring visible and effective out come.

## Linux-Oracle Platform

RHEL 5.0 AS, Oracle 11g Database Server, Oracle 11g Application Server  
Oracle HTTP Server (OHS), Apache Web Server

## Windows-Oracle Platform

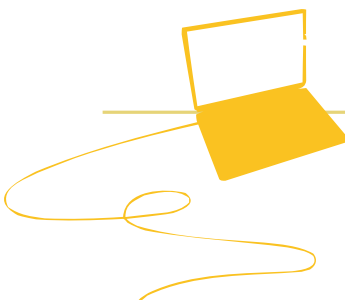
Windows 2000/2008 Server or Later, Oracle 11g, Application Server,  
Visual Studio 2010, Apache Web Server.

## LAMP Platform

Linux, Apache, MySQL, PHP/Perl.

## JAVA Based Solutions

J2SE, J2EE, J2ME, Apache TomCat Sever, JBoss Application Server, Eclipse IDE,  
Spring, Struts, Hibernate Framework, JDK 1.3 or Later, Oracle Jbuilder.



# How We Work

## Project Management

*Communication with a Customer* - The customer resolves all issues by communicating with the assigned Project Manager, responsible for planning the work, performing overall management and tracking the progress. Customer side. It is reasonable that the customer assigns a responsible contact person, e.g. a Project Coordinator, to address all possible issues from Promiti team.

*Planning and Reporting*- A detailed plan is created at the beginning of each phase and updated by the project manager at least weekly. This allows transparent tracking of the status of the project and provides a clear vision of the cost of the whole project and its every step.

*Requirements Management*- From the experience we know that creation of a visual prototype of the future solution (just a GUI, look and feel, real controls and navigation) at the requirements gathering stage is an effective practice. Its purpose is to let the customer "feel" the future solution and probably adjust the requirements at the very beginning.

*Change Management*- This approach allows the customer to easily control time line and budget of the project.

*Risk Management*- There are some risks for offshore projects and many offshore teams tend to ignore them, which leads to failure of software development projects. Our experience of efficient risk management allows us to avoid the man finish the project in time and within budget.

*Competence Transfer*- It involves documentation and knowledge transfer including transfer of specifications, design, test, release, guideline documents and user manuals and end user or administrator training.

## Quality Control

Promiti has been in software development for over a decade. Our expertise in developing different kinds of projects for various industries and with varied budgets has allowed us to polish our approach to overall quality assessment. We have elaborated "Promiti's Best Practices" that help us manage the quality of our solutions and services and keep them on the highest industry standard level. We are guided by the following principles:

- Strong project management and transparent project flow;
- Clear requirements management process and baseline documentation creation; Planning/reporting;
- Providing solution prototypes shortly after the project start;
- Independent complex quality assurance - from the very beginning till the very end.





# Clients and Strategic Partners



Prime Minister's Office



**BPSC**  
Bangladesh Public  
Service Commission



University Grants  
Commission  
of Bangladesh



Rural  
Electrification  
Board



BIMB



**Biman**  
BANGLADESH AIRLINES  
Department  
of Flight Safety



Population Council



ARBAN



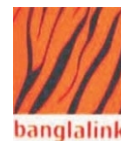
**PRACTICUM**  
STRATEGIES  
USA



UK



grameenphone



banglalink



Citycell™



airtel



TelTalk  
আমাদের ফোন



MI Cement Factory Ltd.

# Contact Us

<b>Office</b>	Imperial Tower (3rd Floor) 166, Mirpur Road, Kalabagan Dhaka-1205, Bangladesh.
<b>Phone</b>	0088-02-9127328
<b>FAX</b>	0088-02-9133902
<b>E-mail</b>	info@promiti.com ramin@promiti.com
<b>Website</b>	<a href="http://www.promiti.com">http://www.promiti.com</a>

